

## SOLAR MODULES

### EQS260D-24

EQS280D-24 EQS270D-24  
EQS260D-24 EQS250D-24  
EQS240D-24

### Specifications

Cell	mono-crystalline silicon solar cells 156×156mm
No. of cells and connections	72(6×12)
Dimension of module (mm)	1956×992×50
Weight	23 Kg

### Characteristics

Model	EQS280D-24	EQS270D-24	EQS260D-24	EQS250D-24	EQS240D-24
Open circuit voltage(Voc)	44.1V	43.8V	43.6V	43.2V	43.2V
Optimum operating voltage(Vmp)	35.3V	35.3V	34.9V	34.4V	34.3V
Short circuit current(Isc)	8.31A	8.1A	7.9A	7.82A	7.7A
Optimum operating current(Imp)	7.93A	7.65A	7.45A	7.27A	7.00A
Maximum Power at STC(Pm)	280Wp	270Wp	260Wp	250Wp	240Wp

STC: Irradiance 1000W/m<sup>2</sup>, Module temperature 25°C, AM=1.5

### Limits

Operating temperature	-40 to +85°C
Maximum system voltage	1000 V DC

### Temperature and Coefficients

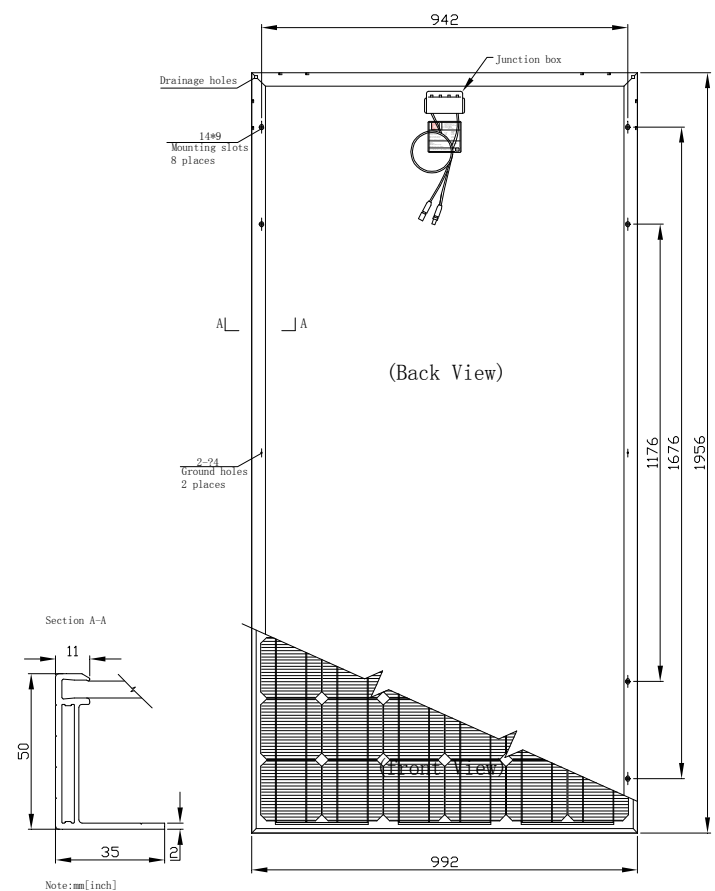
NOCT	47°C
Current temperature coefficient	(0.065 ± 0.015) %mA/°C
Voltage temperature coefficient	-0.38% mV/°C
Power temperature coefficient	-(0.5 ± 0.05) %/°C

NOCT: Nominal Operation Cell temperature

### Output

Type of output terminal	Junction box
Cable	LAPP(4.0mm <sup>2</sup> )
Asymmetrical lengths	1200mm (-), 1200mm(+)
Connection	MC4

Blueprint of the module



## SOLAR MODULES

### EQS260P-24

EQS280P-24 EQS270P-24  
EQS260P-24 EQS250P-24  
EQS240P-24

### Specifications

Cell	polycrystalline silicon solar cells 156×156mm
No. of cells and connections	72(6×12)
Dimension of module (mm)	1956×992×50
Weight	23 Kg

### Characteristics

Model	EQS280P-24	EQS270P-24	EQS260P-24	EQS250P-24	EQS240P-24
Open circuit voltage(Voc)	44.1V	43.8V	43.6V	43.2V	43.2V
Optimum operating voltage(Vmp)	35.2V	35.2V	34.8V	34.3V	34.2V
Short circuit current(Isc)	8.31A	8.1A	7.9A	7.82A	7.7A
Optimum operating current(Imp)	7.95A	7.67A	7.47A	7.29A	7.02A
Maximum Power at STC(Pm)	280Wp	270Wp	260Wp	250Wp	240Wp

STC: Irradiance 1000W/m<sup>2</sup>, Module temperature 25°C, AM=1.5

### Limits

Operating temperature	-40 to +85°C
Maximum system voltage	1000 V DC

### Temperature and Coefficients

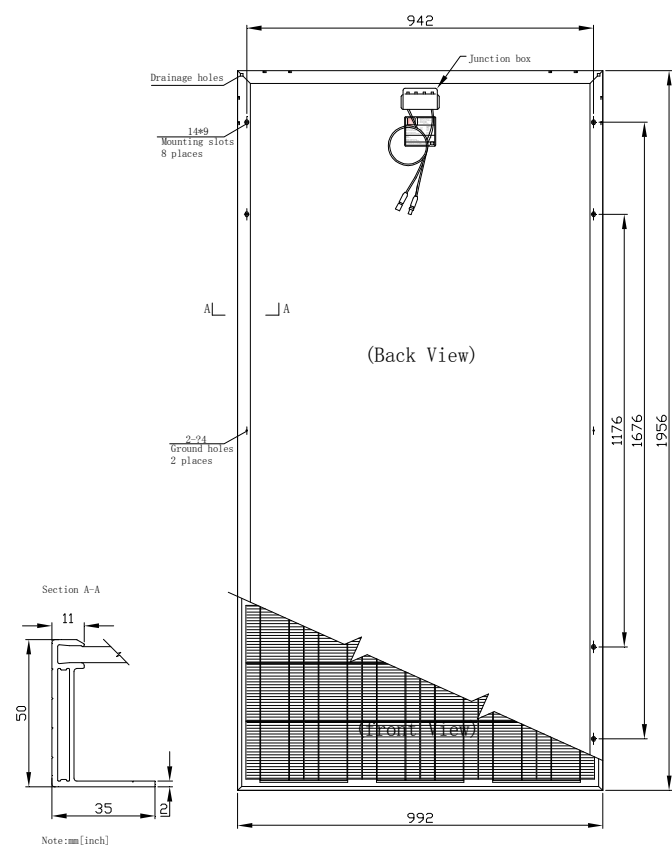
NOCT	47°C
Current temperature coefficient	(0.065 ± 0.015) %mA/°C
Voltage temperature coefficient	-0.38% mV/°C
Power temperature coefficient	-(0.5 ± 0.05) %/°C

NOCT: Nominal Operation Cell temperature

### Output

Type of output terminal	Junction box
Cable	LAPP(4.0mm <sup>2</sup> )
Asymmetrical lengths	1200mm (-), 1200mm(+)
Connection	MC4

Blueprint of the module



## SOLAR MODULES

### EQS200D-18

EQS210D-18 EQS200D-18  
EQS190D-18 EQS180D-18

### Specifications

Cell	mono-crystalline silicon solar cells 156×156mm
No. of cells and connections	54(6×9)
Dimension of module (mm)	1482×992×42
Weight	17.5 Kg

### Characteristics

Model	EQS210D-18	EQS200D-18	EQS190D-18	EQS180D-18
Open circuit voltage(Voc)	33.2V	32.8V	32.8V	32.4V
Optimum operating voltage(Vmp)	26.7V	26.3V	26.3V	25.8V
Short circuit current(Isc)	8.1A	8.0A	7.82A	7.7A
Optimum operating current(Imp)	7.86A	7.60A	7.22A	6.97A
Maximum Power at STC(Pm)	210Wp	200Wp	190Wp	180Wp

STC: Irradiance 1000W/m<sup>2</sup>, Module temperature 25°C, AM=1.5

### Limits

Operating temperature	-40 to +85°C
Maximum system voltage	1000 V DC

### Temperature and Coefficients

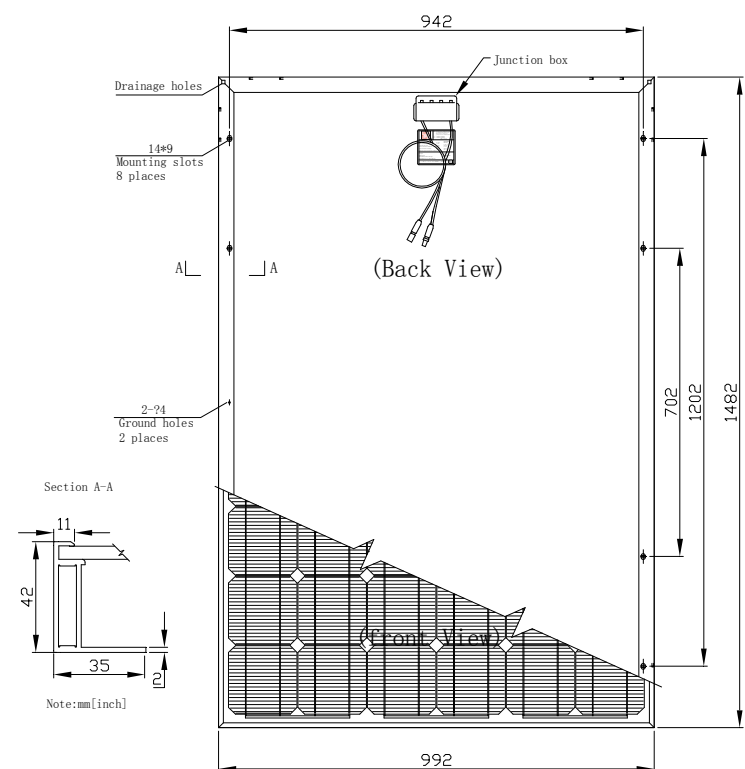
NOCT	47°C
Current temperature coefficient	(0.065 ± 0.015) %mA/°C
Voltage temperature coefficient	-0.38% mV/°C
Power temperature coefficient	-(0.5 ± 0.05) %/°C

NOCT: Nominal Operation Cell temperature

### Output

Type of output terminal	Junction box
Cable	LAPP(4.0mm <sup>2</sup> )
Asymmetrical lengths	900mm (-), 900mm(+)
Connection	MC4

### Blueprint of the module



## SOLAR MODULES

### EQS200P-18

EQS210P-18 EQS200P-18  
EQS190P-18 EQS180P-18

### Specifications

Cell	polycrystalline silicon solar cells 156×156mm
No. of cells and connections	54 (6×9)
Dimension of module (mm)	1482×992×42
Weight	17.5 Kg

### Characteristics

Model	EQS210P-18	EQS200P-18	EQS190P-18	EQS180P-18
Open circuit voltage(Voc)	33.2V	32.8V	32.8V	32.4V
Optimum operating voltage(Vmp)	26.4V	26.0V	26.0V	25.7V
Short circuit current(Isc)	8.1A	8.0A	7.82A	7.7A
Optimum operating current(Imp)	7.96A	7.69A	7.31A	7.0A
Maximum Power at STC(Pm)	210Wp	200Wp	190Wp	180Wp

STC: Irradiance 1000W/m<sup>2</sup>, Module temperature 25°C, AM=1.5

### Limits

Operating temperature	-40 to +85°C
Maximum system voltage	1000 V DC

### Temperature and Coefficients

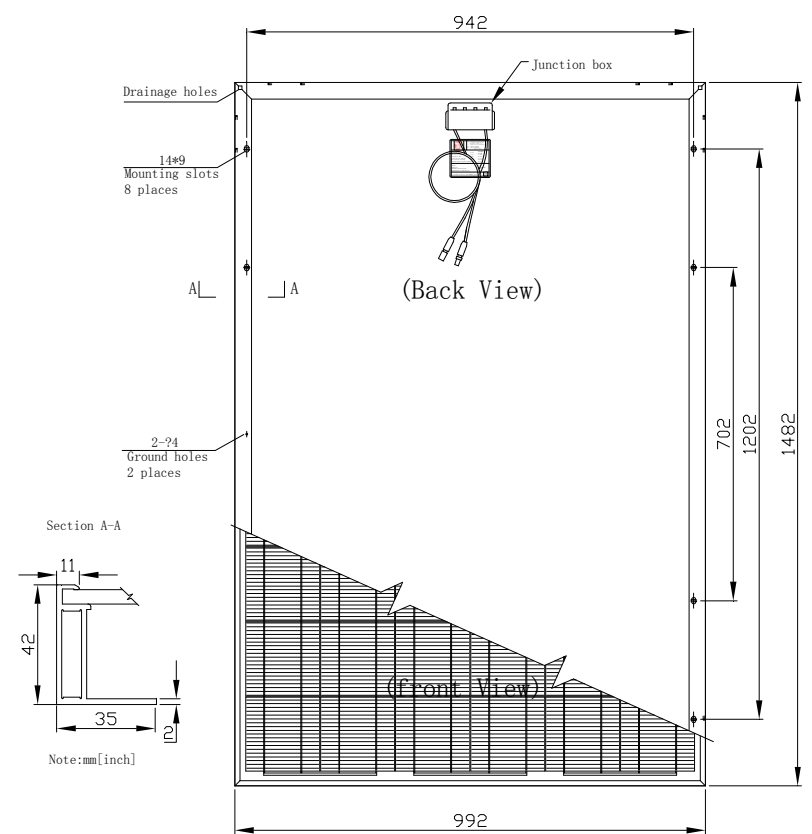
NOCT	47°C
Current temperature coefficient	(0.065 ± 0.015) %mA/°C
Voltage temperature coefficient	-0.38% mV/°C
Power temperature coefficient	-(0.5 ± 0.05) %/°C

NOCT: Nominal Operation Cell temperature

### Output

Type of output terminal	Junction box
Cable	LAPP(4.0mm <sup>2</sup> )
Asymmetrical lengths	900mm (-), 900mm(+)
Connection	MC4

### Blueprint of the module



## SOLAR MODULES

### EQS130D-12

EQS140D-18 EQS130D-18

EQS120D-18

### Specifications

Cell	mono-crystalline silicon solar cells 156×156mm
No. of cells and connections	36(4×9)
Dimension of module (mm)	1482×676×35
Weight	11.5 Kg

### Characteristics

Model	EQS140D-12	EQS130D-12	EQS120D-12
Open circuit voltage(Voc)	22.2V	21.8V	21.6V
Optimum operating voltage(Vmp)	17.6V	17.3V	17.3V
Short circuit current(Isc)	8.06A	7.85A	7.7A
Optimum operating current(Imp)	7.95A	7.51A	6.94A
Maximum Power at STC(Pm)	140Wp	130Wp	120Wp

STC: Irradiance 1000W/m<sup>2</sup>, Module temperature 25°C, AM=1.5

### Limits

Operating temperature	-40 to +85°C
Maximum system voltage	1000 V DC

### Temperature and Coefficients

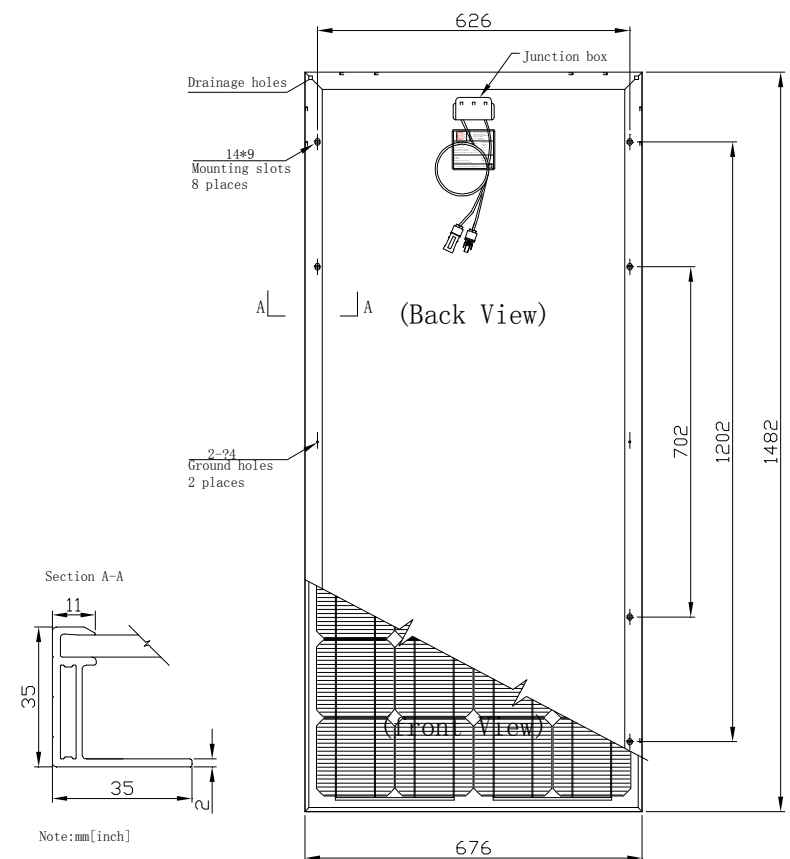
NOCT	47°C
Current temperature coefficient	(0.065 ± 0.015) %mA/°C
Voltage temperature coefficient	-0.38% mV/°C
Power temperature coefficient	-(0.5 ± 0.05) %/°C

NOCT: Nominal Operation Cell temperature

### Output

Type of output terminal	Junction box
Cable	NanYang(4.0mm <sup>2</sup> )
Asymmetrical lengths	700mm(-), 700mm(+)
Connection	CY-C1

Blueprint of the module



## SOLAR MODULES

### EQS130P-12

EQS140P-12 EQS130P-12  
EQS120P-12

### Specifications

Cell	polycrystalline silicon solar cells 156×156mm
No. of cells and connections	36(4×9)
Dimension of module (mm)	1482×676×35
Weight	11.5 Kg

### Characteristics

Model	EQS140P-12	EQS130P-12	EQS120P-12
Open circuit voltage(Voc)	22.2V	21.8V	21.6V
Optimum operating voltage(Vmp)	17.5V	17.1V	17.1V
Short circuit current(Isc)	8.06A	7.85A	7.70A
Optimum operating current(Imp)	8.0A	7.60A	7.02A
Maximum Power at STC(Pm)	140Wp	130Wp	120Wp

STC: Irradiance 1000W/m<sup>2</sup>, Module temperature 25°C, AM=1.5

### Limits

Operating temperature	-40 to +85°C
Maximum system voltage	1000 V DC

### Temperature and Coefficients

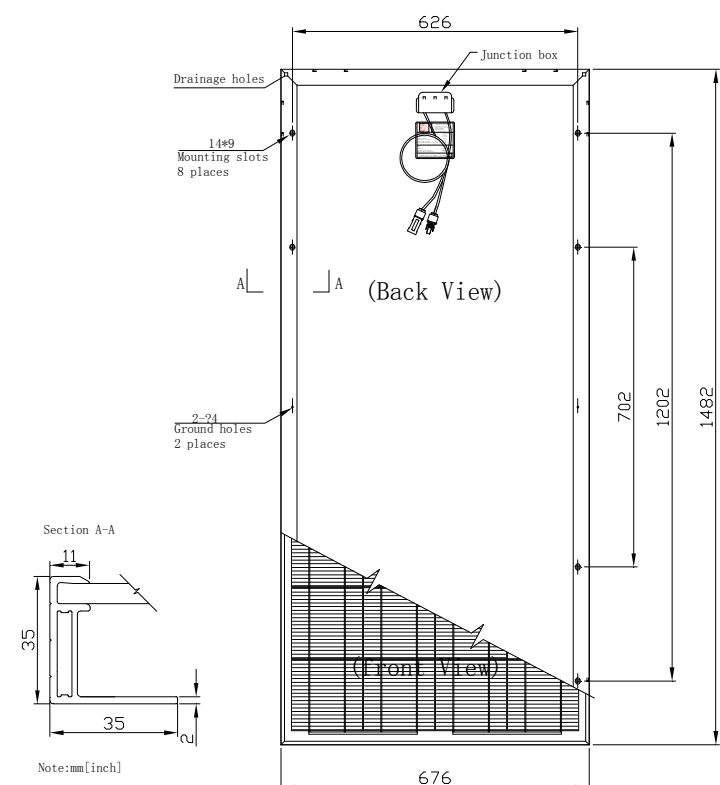
NOCT	47°C
Current temperature coefficient	(0.065 ± 0.015) %mA/°C
Voltage temperature coefficient	-0.38% mV/°C
Power temperature coefficient	-(0.5 ± 0.05) %/°C

NOCT: Nominal Operation Cell temperature

### Output

Type of output terminal	Junction box
Cable	NanYang(4.0mm <sup>2</sup> )
Asymmetrical lengths	700mm(-), 700mm(+)
Connection	CY-C1

Blueprint of the module



## SOLAR MODULES

### EQS065D-12

EQS070D-12 EQS065D-12

EQS060D-12

### Specifications

Cell	mono-crystalline silicon solar cells 156×78mm
No. of cells and connections	36(4×9)
Dimension of module (mm)	771×665×30
Weight	6 Kg

### Characteristics

Model	EQS070D-12	EQS065D-12	EQS060D-12
Open circuit voltage(Voc)	22.2V	21.8V	21.6V
Optimum operating voltage(Vmp)	17.6V	17.3V	17.3V
Short circuit current(Isc)	4.03A	3.93A	3.85A
Optimum operating current(Imp)	3.98A	3.76A	3.47A
Maximum Power at STC(Pm)	70Wp	65Wp	60Wp

STC: Irradiance 1000W/m<sup>2</sup>, Module temperature 25°C, AM=1.5

### Limits

Operating temperature	-40 to +85°C
Maximum system voltage	715 V DC

### Temperature and Coefficients

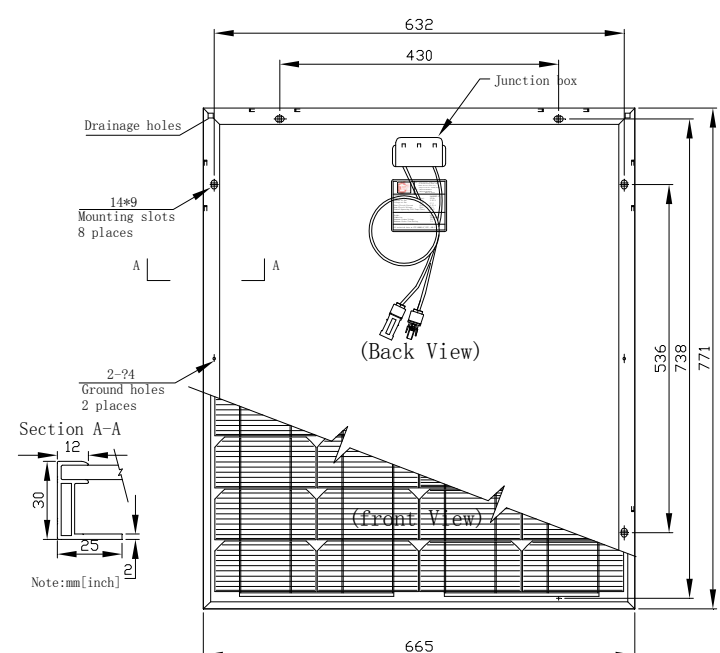
NOCT	47°C
Current temperature coefficient	(0.065 ± 0.015) %mA/°C
Voltage temperature coefficient	-0.38% mV/°C
Power temperature coefficient	-(0.5 ± 0.05) %/°C

NOCT: Nominal Operation Cell temperature

### Output

Type of output terminal	Junction box
Cable	NanYang(4.0mm <sup>2</sup> )
Asymmetrical lengths	700mm(-),700mm(+)
Connection	CY-C1

Blueprint of the module



## SOLAR MODULES

### EQS065P-12

EQS070P-12 EQS065P-12

EQS060P-12

### Specifications

Cell	polycrystalline silicon solar cells 156 × 78 mm
No. of cells and connections	36(4×9)
Dimension of module (mm)	771×665×30
Weight	6 Kg

### Characteristics

Model	EQS070 P-12	EQS065 P-12	EQS060 P-12
Open circuit voltage(Voc)	22.2V	21.8V	21.6V
Optimum operating voltage(Vmp)	17.5V	17.2V	17.2V
Short circuit current(Isc)	4.03A	3.93A	3.85V
Optimum operating current(Imp)	4.0A	3.78A	3.49V
Maximum Power at STC(Pm)	70Wp	65 Wp	60 Wp

STC: Irradiance 1000W/m<sup>2</sup>, Module temperature 25°C, AM=1.5

### Limits

Operating temperature	-40 to +85°C
Maximum system voltage	715 V DC

### Temperature and Coefficients

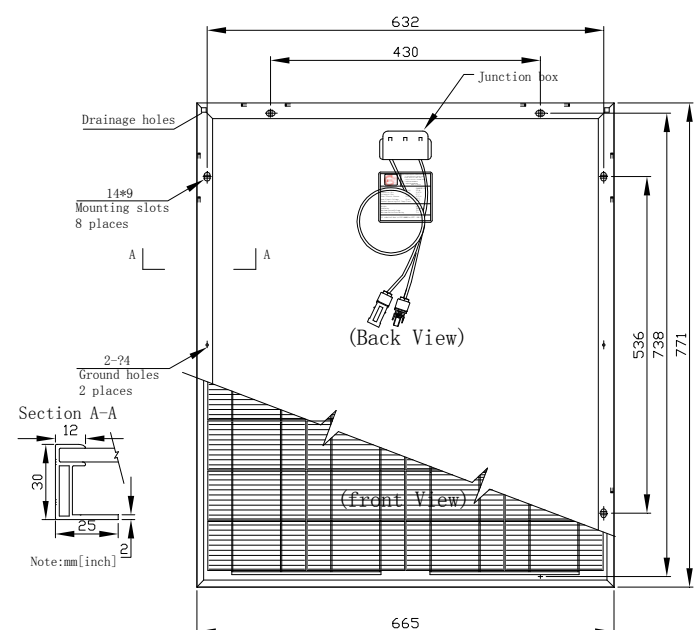
NOCT	47°C
Current temperature coefficient	(0.065 ± 0.015) %mA/°C
Voltage temperature coefficient	-0.38% mV/°C
Power temperature coefficient	-(0.5 ± 0.05) %/°C

NOCT: Nominal Operation Cell temperature

### Output

Type of output terminal	Junction box
Cable	NanYang(4.0mm <sup>2</sup> )
Asymmetrical lengths	700mm(-),700mm(+)
Connection	CY-C1

Blueprint of the module



## SOLAR MODULES

### EQS040D-12

EQS045D-12 EQS040D-12

### Specifications

Cell	mono-crystalline silicon solar cells 156×52mm
No. of cells and connections	36(4×9)
Dimension of module (mm)	537×665×30
Weight	4.5 Kg

### Characteristics

Model	EQS045D-12	EQS040D-12
Open circuit voltage(Voc)	21.8V	21.6V
Optimum operating voltage(Vmp)	17.6V	17.3V
Short circuit current(Isc)	2.71A	2.62A
Optimum operating current(Imp)	2.56A	2.31A
Maximum Power at STC(Pm)	45Wp	40 Wp

STC: Irradiance 1000W/m<sup>2</sup>, Module temperature 25°C, AM=1.5

### Limits

Operating temperature	-40 to +85°C
Maximum system voltage	715 V DC

### Temperature and Coefficients

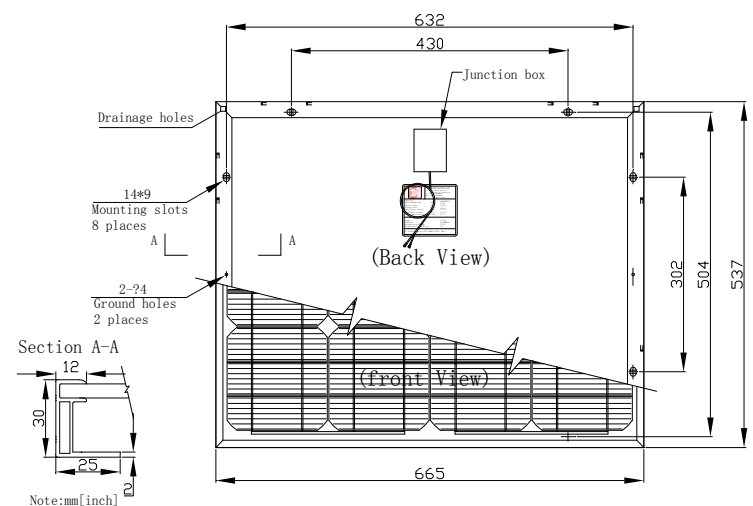
NOCT	47°C
Current temperature coefficient	(0.065 ± 0.015) %mA/°C
Voltage temperature coefficient	-0.38% mV/°C
Power temperature coefficient	-(0.5 ± 0.05) %/°C

NOCT: Nominal Operation Cell temperature

### Output

Type of output terminal	Junction box
Cable	Jing Yi(2×0.75mm <sup>2</sup> )
Lengths	500mm

Blueprint of the module



## SOLAR MODULES

### EQS040P-12

EQS045P-12 EQS040P-12

### Specifications

Cell	polycrystalline silicon solar cells 156×52mm
No. of cells and connections	36(4×9)
Dimension of module (mm)	537×665×30
Weight	4.5Kg

### Characteristics

Model	EQS045P-12	EQS040P-12
Open circuit voltage(Voc)	21.8V	21.6V
Optimum operating voltage(Vmp)	17.5V	17.1V
Short circuit current(Isc)	2.71A	2.62A
Optimum operating current(Imp)	2.57A	2.34A
Maximum Power at STC(Pm)	45Wp	40 Wp

STC: Irradiance 1000W/m<sup>2</sup>, Module temperature 25°C, AM=1.5

### Limits

Operating temperature	-40 to +85°C
Maximum system voltage	715 V DC

### Temperature and Coefficients

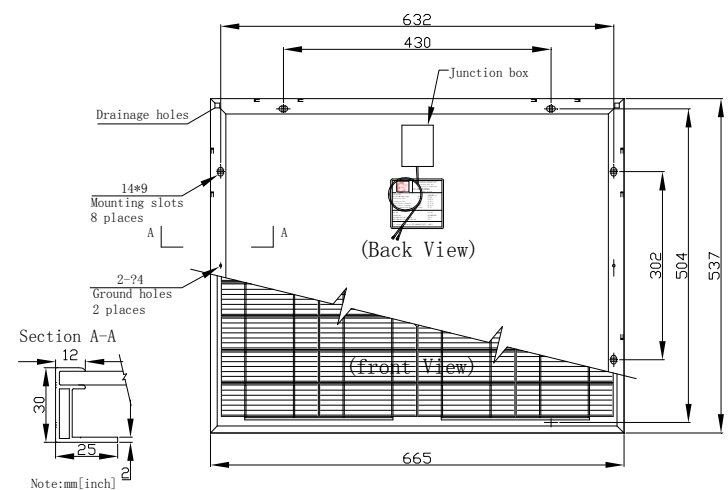
NOCT	47°C
Current temperature coefficient	(0.065 ± 0.015) %mA/°C
Voltage temperature coefficient	-0.38% mV/°C
Power temperature coefficient	-(0.5 ± 0.05) %/°C

NOCT: Nominal Operation Cell temperature

### Output

Type of output terminal	Junction box
Cable	Jing Yi(2×0.75mm <sup>2</sup> )
Lengths	500mm

Blueprint of the module



## SOLAR MODULES

### EQS030D-12

EQS034D-12 EQS032D-12

EQS030D-12

### Specifications

Cell	mono-crystalline silicon solar cells 156×39mm
No. of cells and connections	36(4×9)
Dimension of module (mm)	426×680×18
Weight	3.2 Kg

### Characteristics

Model	EQS034D-12	EQS032D-12	EQS030D-12
Open circuit voltage(Voc)	21.6V	21.6V	21.6V
Optimum operating voltage(Vmp)	17.5V	17.1V	17.1V
Short circuit current(Isc)	2.02A	1.97A	1.93A
Optimum operating current(Imp)	1.94A	1.87A	1.75A
Maximum Power at STC(Pm)	34Wp	32 Wp	30 Wp

STC: Irradiance 1000W/m<sup>2</sup>, Module temperature 25°C, AM=1.5

Blueprint of the module

### Limits

Operating temperature	-40 to +85°C
Maximum system voltage	715 V DC

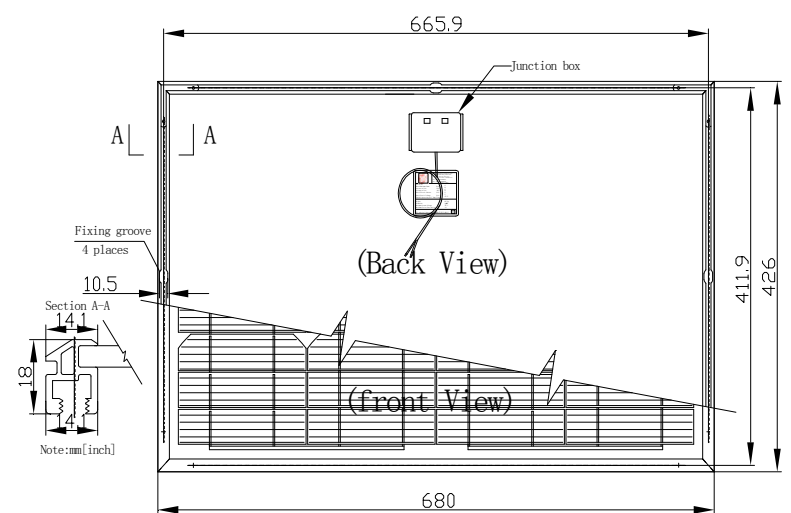
### Temperature and Coefficients

NOCT	47°C
Current temperature coefficient	(0.065 ± 0.015) %mA/°C
Voltage temperature coefficient	-0.38% mV/°C
Power temperature coefficient	-(0.5 ± 0.05) %/ °C

NOCT: Nominal Operation Cell temperature

### Output

Type of output terminal	Junction box
Cable	Jing Yi(2×0.75mm <sup>2</sup> )
Lengths	500mm



## SOLAR MODULES

### EQS030P-12

EQS034P-12 EQS032P-12

EQS030P-12

### Specifications

Cell	polycrystalline silicon solar cells 156×39mm
No. of cells and connections	36(4×9)
Dimension of module (mm)	426×680×18
Weight	3.2 Kg

### Characteristics

Model	EQS034P-12	EQS032P-12	EQS030P-12
Open circuit voltage(Voc)	21.6V	21.6V	21.6V
Optimum operating voltage(Vmp)	17.4V	17.0V	17.0V
Short circuit current(Isc)	2.02A	1.97A	1.93A
Optimum operating current(Imp)	1.95A	1.88A	1.76A
Maximum Power at STC(Pm)	34Wp	32 Wp	30 Wp

STC: Irradiance 1000W/m<sup>2</sup>, Module temperature 25°C, AM=1.5

### Limits

Operating temperature	-40 to +85°C
Maximum system voltage	715 V DC

### Temperature and Coefficients

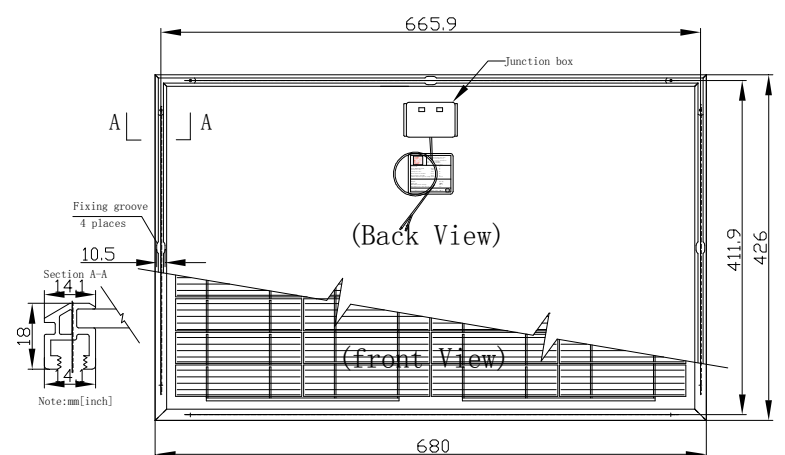
NOCT	47°C
Current temperature coefficient	(0.065 ± 0.015) %mA/°C
Voltage temperature coefficient	-0.38% mV/°C
Power temperature coefficient	-(0.5 ± 0.05) %/ °C

NOCT: Nominal Operation Cell temperature

### Output

Type of output terminal	Junction box
Cable	Jing Yi(2×0.75mm <sup>2</sup> )
Lengths	500mm

Blueprint of the module



## SOLAR MODULES

### EQS010D-12

EQS012D-12 EQS010D-12

#### Specifications

Cell	mono-crystalline silicon solar cells 78×26mm
No. of cells and connections	36(4×9)
Dimension of module (mm)	310×368×18
Weight	1.5 Kg

#### Characteristics

Model	EQS012D-12	EQS010D-12
Open circuit voltage(Voc)	21.9 V	21.5V
Optimum operating voltage(Vmp)	17.5 V	17.1V
Short circuit current(Isc)	0.70 A	0.66A
Optimum operating current(Imp)	0.69 A	0.58A
Maximum Power at STC(Pm)	12Wp	10Wp

STC: Irradiance 1000W/m<sup>2</sup>, Module temperature 25°C, AM=1.5

#### Limits

Operating temperature	-40 to +85°C
Maximum system voltage	715 V DC

#### Temperature and Coefficients

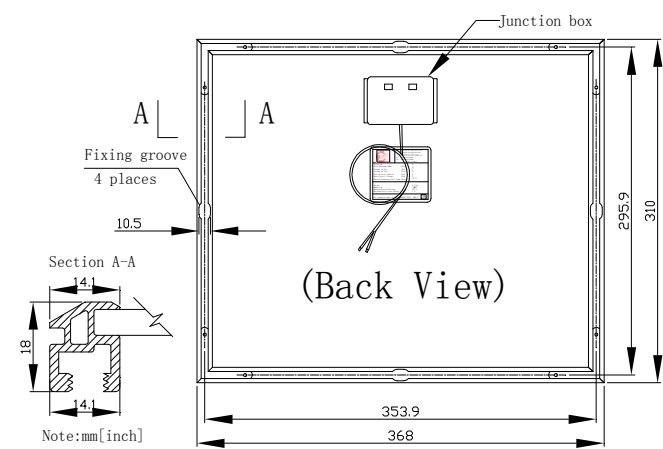
NOCT	47°C
Current temperature coefficient	(0.065 ± 0.015) %mA/°C
Voltage temperature coefficient	-0.38% mV/°C
Power temperature coefficient	-(0.5 ± 0.05) %/°C

NOCT: Nominal Operation Cell temperature

#### Output

Type of output terminal	Junction box
Cable	Jing Yi(2×0.75mm <sup>2</sup> )
Lengths	500mm

#### Blueprint of the module



## SOLAR MODULES

### EQS010P-12

EQS012P-12 EQS010P-12

### Specifications

Cell	polycrystalline silicon solar cells 78×26mm
No. of cells and connections	36(4×9)
Dimension of module (mm)	310×368×18
Weight	1.5 Kg

### Characteristics

Model	EQS012P-12	EQS010P-12
Open circuit voltage(Voc)	21.9 V	21.5V
Optimum operating voltage(Vmp)	17.4 V	17.0V
Short circuit current(Isc)	0.70 A	0.66A
Optimum operating current(Imp)	0.69 A	0.59A
Maximum Power at STC(Pm)	12Wp	10 Wp

STC: Irradiance 1000W/m<sup>2</sup>, Module temperature 25°C, AM=1.5

### Blueprint of the module

### Limits

Operating temperature	-40 to +85°C
Maximum system voltage	715 V DC

### Temperature and Coefficients

NOCT	47°C
Current temperature coefficient	(0.065 ± 0.015) %mA/°C
Voltage temperature coefficient	-0.38% mV/°C
Power temperature coefficient	-(0.5 ± 0.05) %/ °C

NOCT: Nominal Operation Cell temperature

### Output

Type of output terminal	Junction box
Cable	Jing Yi(2×0.75mm <sup>2</sup> )
Lengths	500mm

